

Title: Medite Premier FR Euroclass C 30 Minute Fire Rated Partition Wall	Document type: User Guidelines
Doc. No.: TEUSG0429	Revision: 0



Medite Premier FR Euroclass C – 30 Minute Fire Rated Partition Wall (Non Load Bearing)

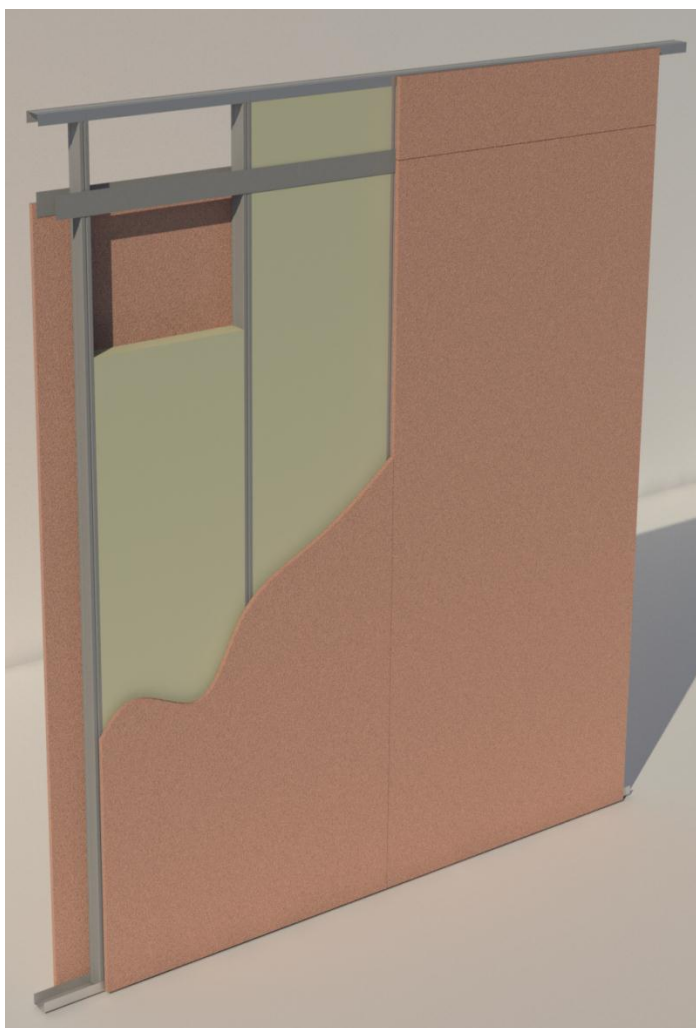
Medite Europe has achieved a 30 minutes fire rating, integrity and insulation in accordance with the criteria of BS 476: Part 22: 1987 Clause 5 for an internal wall partition. The illustrated non-load bearing partition wall design utilised two skins of 18mm Medite Premier FR Euroclass C and satisfied the performance requirements, confirmed by Exova Warrington fire report No. 336759.

Material Specification:

Sheeting Specification: 18mm Medite Premier FR Euroclass C To EN 13501-1: 2007. + A1:2009	Insulation Specification: Rockwool RW5 mineral wool slabs 75mm Thick (1000mm x 600mm)
Framing/Studwork: Metal frame stud reference's refer to the British Gypsum - Gypframe System (or similar approved)	Fixings: British Gypsum Drywall Screws Order Code 27386/5 (or similar approved)

Partition Specification:

Framing, Insulation & Sheeting



Sheeting:

18mm Medite Premier FR Euroclass C To EN 13501-1: 2007. + A1:2009

Head and Soleplate:

Channel "C" Type of galvanised mild steel, 72mm x 29mm x 0.50mm thick. (Gypframe System 72 FEC 50).

Vertical Stud:

Stud "C" Type of galvanised mild steel, 70mm x 32mm x 0.50mm thick (including galvanizing) to be fixed at maximum 600mm centres.

(Gypframe System 70 S 50).

Expansion Gap: 15mm is required on all vertical studs at head of partition.

Horizontal Joints:

Fixing Strap of galvanised mild steel, 70mm x 0.50mm thick (including galvanizing) to be placed behind all horizontal joints to maintain board fixing centres.

(Gypframe System GFS1).

Insulation:

All partitions are to be fully insulated using Rockwool RW5 Insulation (1000mm x 600mm x 75mm) Insulation is to be friction fitted (Snug Fit), No loose fitting insulation. As per manufactures instructions.

Important:

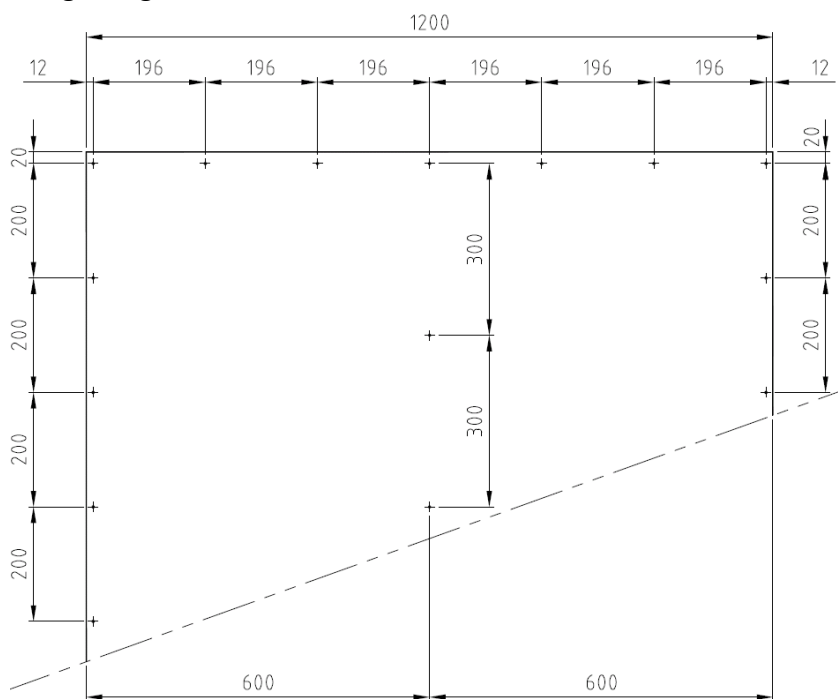
When fitting insulation, ensure that horizontal joints in insulation do not coincide with horizontal joints in the Medite Premier FR Euroclass C sheeting. All horizontal joints are to be offset/staggered by a minimum offset of no less than 100mm.

Title: Medite Premier FR Euroclass C 30 Minute Fire Rated Partition Wall	Document type: User Guidelines
Doc. No.: TEUSG0429	Revision: 0



Partition Specification:

Sheeting fixings centres



Typical Panel Fixing Layout:

Board Perimeter Fixing :
200mm C/C (Nom.)

Intermediate Vertical Fixing:
300mm C/C (Nom.)

Intermediate Horizontal Fixing :
600mm C/C (Nom.)

Screws:

British Gypsum Drywall Screws
Order Code 27386/5

TECHNICAL DATA

30 minutes fire rating integrity and insulation in accordance with the criteria of BS 476: Part 22: 1987.

Disclaimer

- Any changes to the construction and materials described in this document will invalidate the fire rating.
- The Fire Safety Requirements of the building should be discussed with the Building Control Officer, the Fire Officer and all Engineering and Architectural interests prior to commencing work.
- For further information and/or technical advice, please contact Medite Technical Support Personnel through any of our European offices www.medite-europe.com
- Medite Europe reserves the right to modify this document without prior notification.